



Russell R. McMurry, P.E., Commissioner
One Georgia Center
600 West Peachtree NW
Atlanta, GA 30308
(404) 631-1990 Main Office

January 23, 2023

Dr. Randall Peters, Chairman
City of Griffin
100 South Hill St.
Griffin, Georgia 30223

RE: Griffin-Spalding County Airport (6A2) - Airport Layout Plan Conditional Approval

Dr. Peters,

The Federal Aviation Administration (FAA), through its State Block Grant Program agreement (SBGP) with the Georgia Department of Transportation (GDOT), conditionally approves the Airport Layout Plan (ALP) for the Griffin-Spalding County Airport (6A2). This approval is subject to the following conditions:

- The FAA Reauthorization Act of 2018, section 163(d) has limited the FAA/GDOT approval authority for ALPs. This Act limits the approval authority to those portions of the ALP that materially impact the safe and efficient and efficient operation of aircraft at, to, or from the airport; adversely affect the safety of people or property on the ground adjacent to the airport as a result of aircraft operations; or adversely affect the value of prior Federal investments to a significant extent.

Approval of this ALP is limited to existing facilities that meet the criteria listed above. FAA/GDOT has not made a determination on whether it retains review and approval authority for any proposed facilities depicted on the ALP. Under Title 49 U.S.C. § 47107 (a)(16) (as revised per section 163(d) of Pub.L. 115-254), FAA/GDOT will separately determine whether it retains approval authority for each individual proposed facility depicted on an ALP before construction occurs.

Although section 163(d) has limited the review and approval authority of proposed projects depicted on an ALP, airport sponsors must continue to maintain an up-to-date ALP in accordance with Federal law 49 U.S.C. § 47107 (a)(16).

- Environmental approval is required from GDOT and/or FAA prior to the implementation of any proposed airport development project where the FAA/GDOT retains ALP approval authority;
- Facilities and equipment are designed and constructed in accordance with current FAA Advisory Circulars and Orders and coordinated with FAA Tech Ops;
- FAA Form 7460-1, *Notice of Proposed Construction or Alteration*, must be filed with the FAA online at <https://oeaaa.faa.gov/> at least 45 days prior to the start of any airport construction in order to receive an airspace determination per 14 CFR Part 77.9, and the recommendations of the determination are implemented; However, the Department recommends filing at least 90 days prior ensure a determination is made before the scheduled start of a project;
- The forecast approved for this ALP was based on information prepared prior to the evolving impacts of the COVID-19 public health emergency. Forecast approval was based on the methodology, data, and conclusions at the time the documents were prepared. However, consideration of the impacts of the COVID-19 public health emergency on aviation activity is warranted to acknowledge the reduced

confidence in growth projections using currently available data. Accordingly, approval of the forecast and critical aircraft and conditional approval of the ALP does not constitute justification for future projects. Justification for future projects will be made based on activity levels at the time the project is requested for development. Documentation of actual activity levels meeting planning activity levels will be necessary to justify Airport Improvement Program (AIP) funding for eligible projects; and

- It is the sponsor's responsibility to update the drawings as a result of any changes different than what is depicted on the approved set. The updated drawings will need to be submitted and formally approved by the Department.

Our conditional approval of the Griffin-Spalding County Airport ALP indicates the proposed airport development shown on the plan meets current FAA airport design standards, as documented in FAA Advisory Circular (AC) 150/5300-13A, *Airport Design*. It is important to note our approval does not represent a commitment to provide federal or state financial assistance in implementing any facilities shown on the plan and does not imply we concur with justification for construction of any proposed airport development at this time.

Please attach this letter to the ALP and retain in the airport's official files. As always, we look forward to working with the City of Griffin in the continued development of the Airport. If you have any questions, please contact Cody Dupre, Aviation Planner, at 404-631-1343 or cdupre@dot.ga.gov.

Sincerely,

Leigh Ann Trainer, Assistant Director
Division of Intermodal

cc: Robert Mohl, Airport Director
Douglas Hollberg, Mayor
Greg Teague, Croy
Rebecca Collins, Croy
Colette Edmisten, Assistant Program Manager
Cody Dupre, GDOT Aviation Planner
Lew Walker, GDOT Aviation Project Manager

GRIFFIN-SPALDING COUNTY AIRPORT

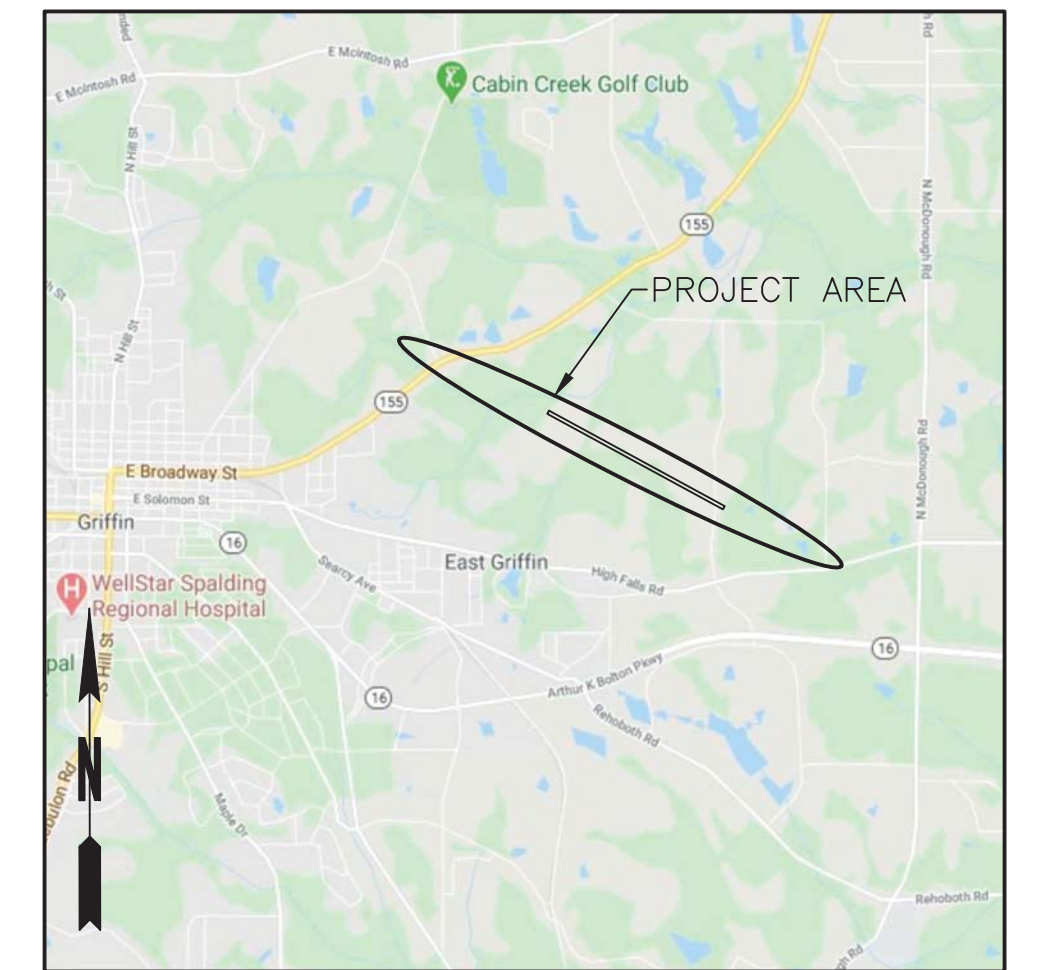
AIRPORT LAYOUT PLAN

CITY OF GRIFFIN, GEORGIA SPALDING COUNTY

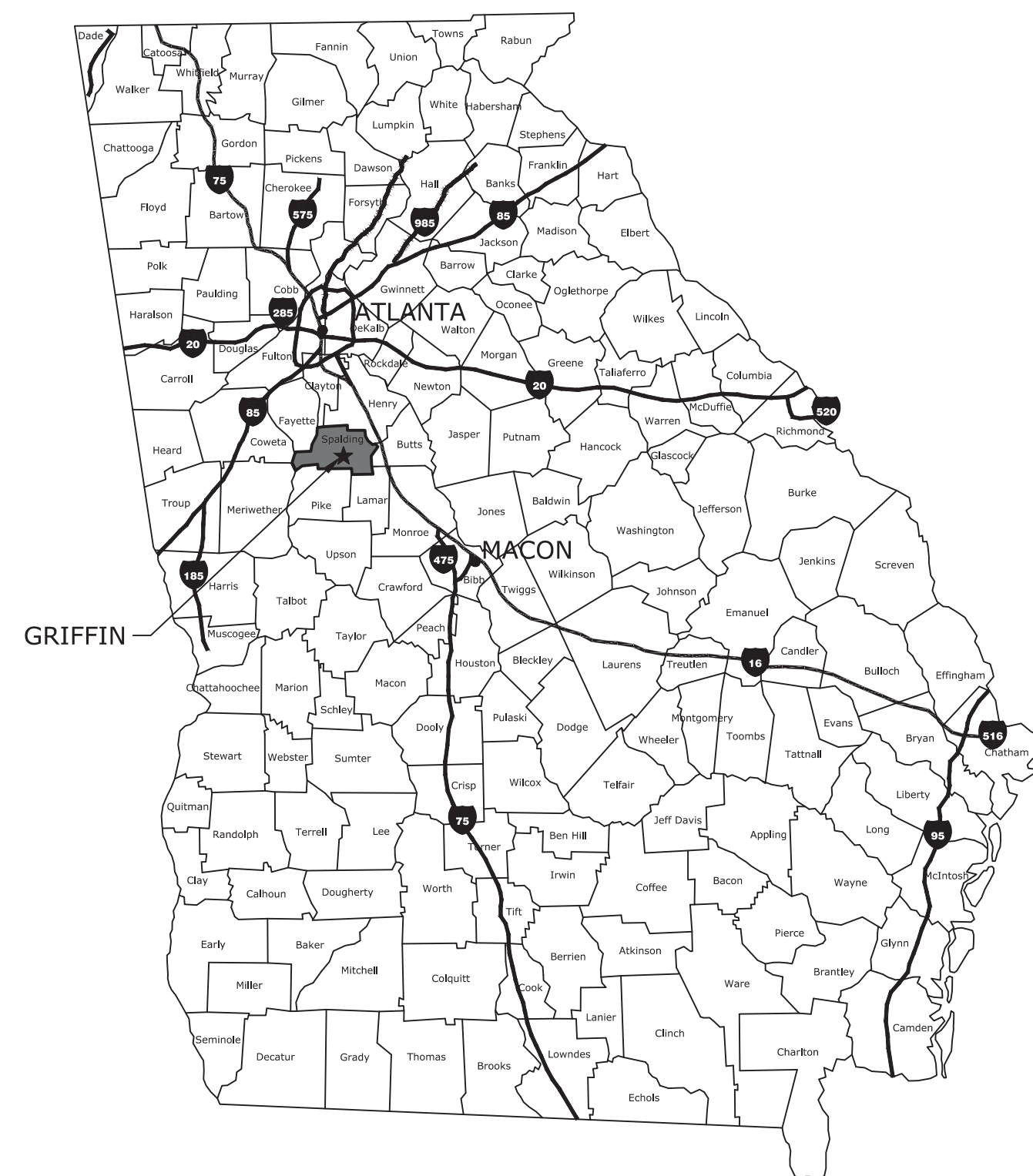
GDOT PROJECT NO. AP 021-9046-34 (255) SPALDING COUNTY
CROY ENGINEERING PROJECT NO. 1846.019
SEPTEMBER, 2022



LOCATION MAP
1" = 2000'



VICINITY MAP
1" = 1 MILE



AIRPORT SPONSOR APPROVAL

THIS AIRPORT DRAWING IS APPROVED BY:

(SIGNATURE): *Randall L. Peters* DATE: *Jan 11, 2023*

NAME: *RANDALL L. PETERS*

TITLE: *Chairman, Griffin-Spalding Airport Authority*

DRAWING INDEX			
SHEET NUMBER	DRAWING NUMBER	SHEET TITLE	REVISION DATE
01	C-000	COVER	
02	C-001	ALP DATA SHEET	
03	C-101	AIRPORT LAYOUT PLAN -- INITIAL	
04	C-102	AIRPORT LAYOUT PLAN -- FUTURE	
05	C-103	TERMINAL AREA PLAN	
06	C-201	INNER PORTION APPROACH -- RW 12	
07	C-202	INNER PORTION APPROACH -- RW 30	
08	C-203	INNER PORTION DEPARTURE -- RW 12	
09	C-204	INNER PORTION DEPARTURE -- RW 30	
10	C-301	AIRSPACE ANALYSIS	
11	C-401	EXHIBIT A	

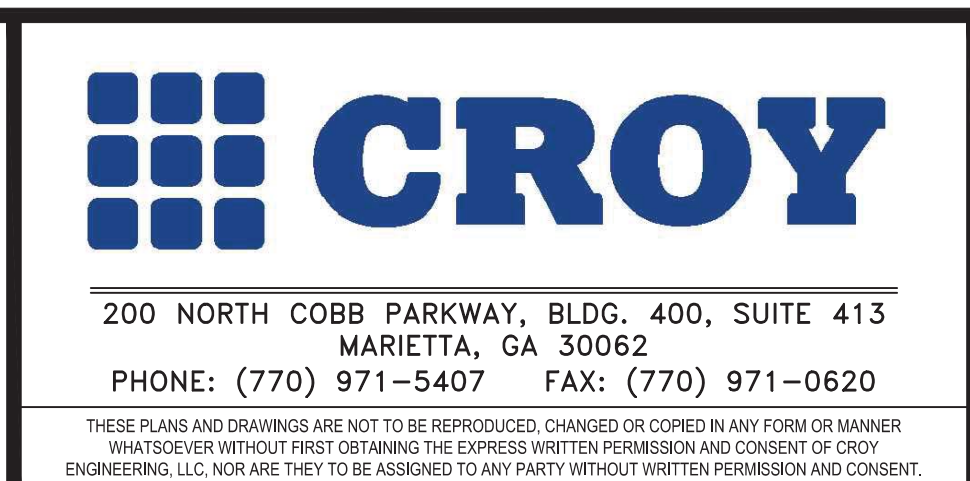
NO.	REVISION REFERENCE	DATE



GRIFFIN-SPALDING COUNTY AIRPORT

AIRPORT LAYOUT PLAN

CITY OF GRIFFIN, SPALDING COUNTY, GEORGIA



SHEET TITLE
COVER

DRAWN BY
TEP

CHECKED BY
RMC

SCALE
AS SHOWN

ISSUE DATE
09/28/2022

PROJECT NUMBER
1846.019

DRAWING NUMBER
C-000

SHEET 01 of 11

ISSUED FOR REVIEW

Drawing Location: P:\Marietta\1846 Griffin-Spalding County Airport Authority\1846.019\ALP\1846.019_ALP_Cover and Data Sheet.dwg

Plot Scale: 1"=50' Drawing Station: 0.07 Plot Style: Design.ctb. Plotted By: Sam Mills on 9/28/2022 7:01 PM

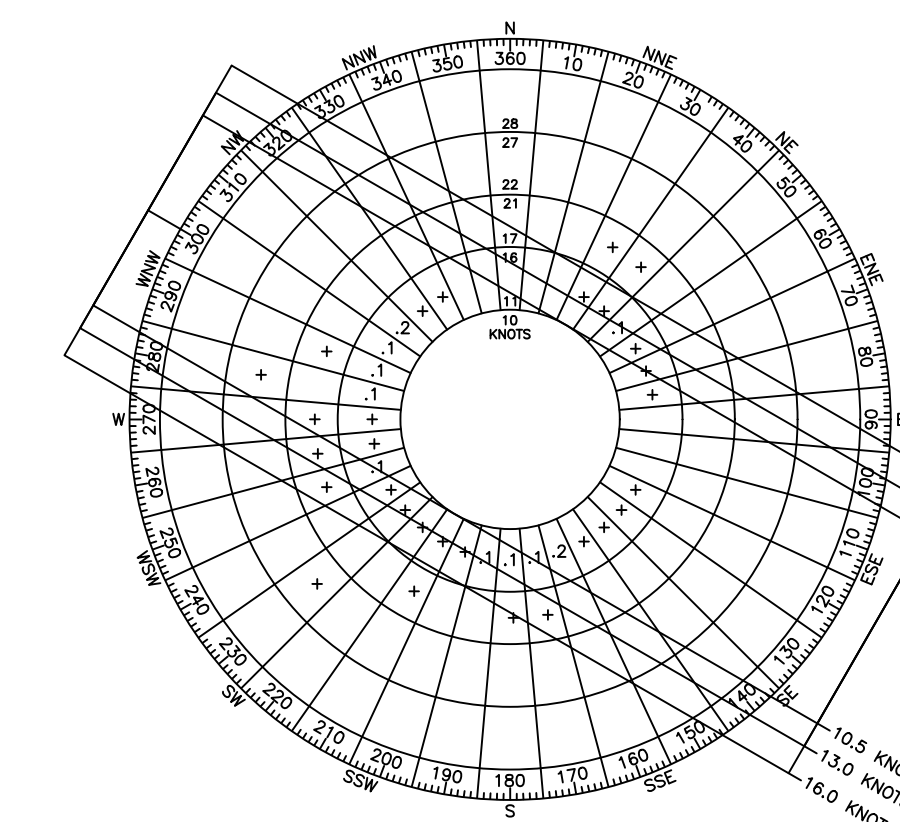
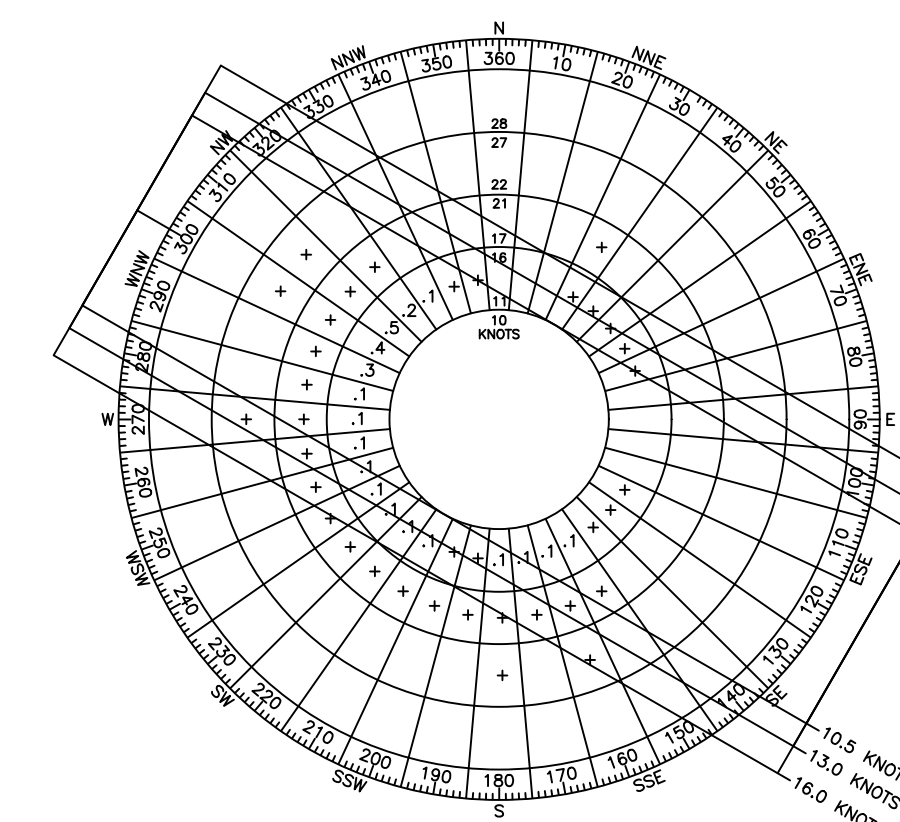
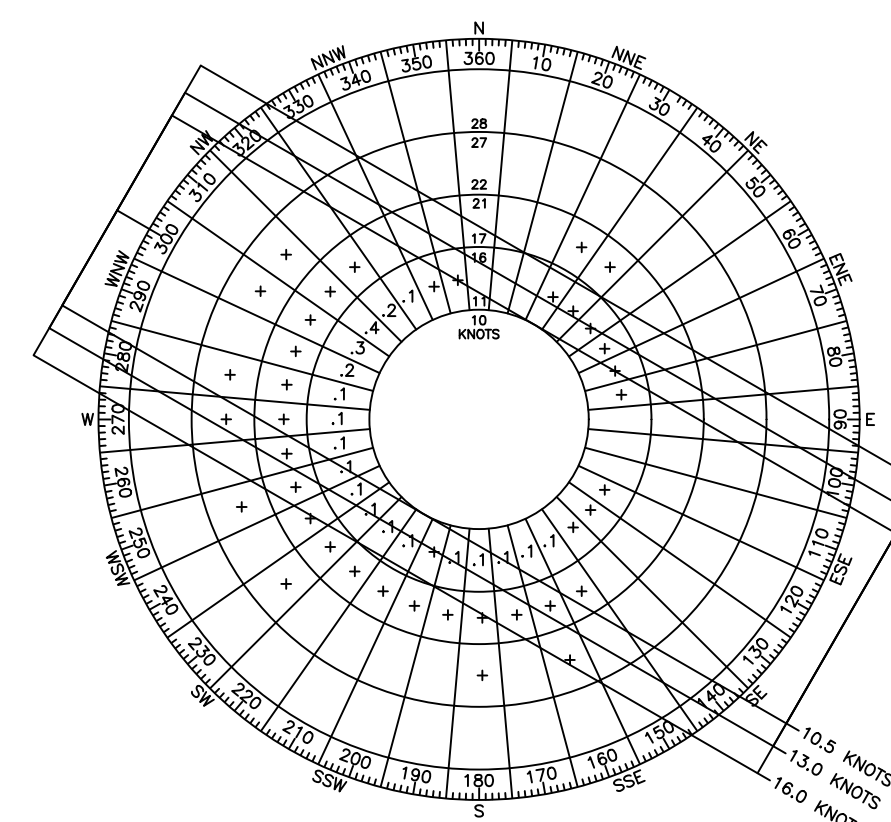
RUNWAY DATA TABLE				
	RUNWAY 12-30			
	INITIAL	FUTURE		
RUNWAY DESIGN CODE (RDC)	B-III/4000	C-II/4000		
APPROACH REFERENCE CODE (APRC)	B-III/4000 D-II/4000	SAME		
DEPARTURE REFERENCE CODE (DPRC)	B-III D-II	SAME		
PAVEMENT STRENGTH	39,000 SW/ 57,00 DW	SAME		
PAVEMENT MATERIAL	ASPHALT	SAME		
SURFACE TREATMENT	NONE	SAME		
EFFECTIVE GRADIENT (%)	0.57%	SAME		
RUNWAY WIND COVERAGE % (ALL WEATHER)	10.5 KTS 13 KTS 16 KTS	99.46% 99.77% 99.98%	SAME SAME SAME	
RUNWAY LENGTH TOTAL	5,000'	6,000'		
RUNWAY LENGTH FEDERALLY JUSTIFIED	4,400'	—		
RUNWAY WIDTH	75'	100'		
RUNWAY SEPARATIONS				
HOLDING POSITION	250'	250'		
PARALLEL TAXIWAY CENTERLINE	300'	SAME		
AIRCRAFT PARKING AREA	570'	SAME		
	RUNWAY 12		RUNWAY 30	
	INITIAL	FUTURE	INITIAL	FUTURE
RUNWAY SAFETY AREA (WIDTH X LENGTH PAST RUNWAY END)	150'x300'	500'x1,000'	150'x300'	500'x1,000'
RUNWAY END COORDINATES (NAD83)				
LATITUDE	33° 15' 14.56" N	33° 15' 19.29" N	33° 14' 50.93" N	SAME
LONGITUDE	84° 13' 18.20" W	84° 13' 28.54" W	84° 12' 26.46" W	SAME
RUNWAY END ELEVATION (NAVD88)	829.6'	823.9'	858.0'	SAME
RUNWAY LIGHTING	MIRL		HIRL	
APPROACH RUNWAY PROTECTION ZONE				
LENGTH	1,700'	SAME	1,700'	SAME
INNER WIDTH	1,000'	SAME	1,000'	SAME
OUTER WIDTH	1,510'	SAME	1,510'	SAME
ACRES	48.98	SAME	48.98	SAME
DEPARTURE RUNWAY PROTECTION ZONE				
LENGTH	1,000'	1,700'	1,000'	1,700'
INNER WIDTH	500'	500'	500'	500'
OUTER WIDTH	700'	1,010'	700'	1,010'
ACRES	23.42	29.47	23.42	29.47
RUNWAY MARKINGS	NP	SAME	NP	PIR
PART 77 APPROACH SURFACE SLOPE	34:1	SAME	34:1	50:1
PART 77 APPROACH CATEGORY	C(NP)	C(NP)	C(NP)	PIR
APPROACH VISIBILITY MINIMUMS	3/4 MILE	SAME	3/4 MILE	SAME
TYPE OF APPROACH TO RUNWAY END	GPS/LPV	SAME	GPS/LPV	GPS/LPV, ILS
TYPE OF AERONAUTICAL SURVEY	VG	SAME	VG	SAME
DEPARTURE SURFACE	YES	SAME	YES	SAME
RUNWAY OBJECT FREE AREA (WIDTH X LENGTH PAST RUNWAY END)	500'x300'	800'x1,000'	500'x300'	800'x1,000'
OBSTACLE FREE ZONE (WIDTH X LENGTH PAST RUNWAY END)	400'x200'	SAME	400'x200'	SAME
THRESHOLD SITING SURFACE	SURFACE 5 - 20:1 SURFACE 6 - 30:1	SAME	SURFACE 5 - 20:1 SURFACE 6 - 30:1	SAME
TSS PENETRATIONS	NONE	SAME	NONE	SAME
NAVAIDS	PAPI-2, GPS	SAME	PAPI-2, GPS	PAPI-2, GPS, GS, LOC, MALSR
TOUCHDOWN ZONE ELEVATION	843.8'	840.9'	858.0'	SAME
TAXIWAY DESIGN GROUP	2A	SAME		
TAXIWAY WIDTH	35'	SAME		
TAXIWAY EDGE SAFETY MARGIN	7.5'	SAME		
TAXIWAY SHOULDER WIDTH	15'	SAME		
TAXIWAY SAFETY AREA	79'	SAME		
TAXIWAY OBJECT FREE AREA	124'	SAME		
TAXILANE OBJECT FREE AREA	110'	SAME		
TAXIWAY CENTERLINE TO FIXED OBJECT	62'	SAME		
TAXILANE CENTERLINE TO FIXED OBJECT	55'	SAME		
TAXIWAY WINGTIP CLEARANCE	23'	SAME		
TAXILANE WINGTIP CLEARANCE	16'	SAME		
TAXIWAY LIGHTING	MITL	SAME		

AIRPORT DATA TABLE		
DESCRIPTION	INITIAL	FUTURE
AIRPORT ACREAGE	522.96	732.94
AIRPORT REFERENCE CODE (ARC)	B-II	C-II
MEAN MAX TEMPERATURE (HOTTEST MONTH)	90° F (JULY)	—
AIRPORT ELEVATION (NAVD88)	858.00'	858.00'
AIRPORT NAVAIDS	BEACON, PAPI-2, GPS, REILS	BEACON, PAPI-2, GPS, REILS, GS, LOC, ALS
AIRPORT REFERENCE POINT (NAD83)		
LATITUDE	33° 15' 02.75" N	33° 15' 05.11" N
LONGITUDE	84° 12' 52.33" W	84° 12' 57.50" W
MISCELLANEOUS FACILITIES	LIGHTED WIND CONE, AWOS	SAME
CRITICAL AIRCRAFT	BEECHCRAFT KING AIR 200 LOCAL GENERAL AVIATION	CESSNA CITATION X+
NPIAS SERVICE LEVEL	AVIATION	SAME
STATE ROLE	LEVEL II	SAME

DECLARED DISTANCES				
	INITIAL		FUTURE	
DISTANCES	RUNWAY 12	RUNWAY 30	RUNWAY 12	RUNWAY 30
TORA	5,000'	5,000'	6,000'	6,000'
TODA	5,000'	5,000'	6,000'	6,000'
ASDA	5,000'	5,000'	6,000'	6,000'
LDA	5,000'	5,000'	6,000'	6,000'
INITIAL LENGTH	5,000'			
FEDERALLY JUSTIFIED INITIAL LENGTH	4,400'			
FUTURE LENGTH	6,000'			

APPROVED MODIFICATION OF DESIGN STANDARDS			
DESCRIPTION	NON-STANDARD ITEM	DESIGN STANDARD	FAA STUDY #/APPROVAL DATE
NONE			

NO EXISTING OR PLANNED MOS



ALL WEATHER COVERAGE (KNOTS)				
RUNWAY	10.5	13	16	
12	63.32%	63.47%	63.58%	
30	72.80%	72.95%	73.05%	
12/30	99.46%	99.77%	99.98%	

VFR COVERAGE (KNOTS)				
RUNWAY	10.5	13	16	
12	61.44%	61.58%	61.68%	
30	75.23%	75.39%	75.50%	
12/30	99.47%	99.77%	99.98%	

IFR COVERAGE (KNOTS)				
RUNWAY	10.5	13	16	
12	78.17%	78.41%	78.60%	
30	52.75%	52.84%	52.91%	
12/30	99.39%	99.72%	99.97%	

NATIONAL CLIMATE DATA CENTER (NCDC)
GRIFFIN SPALDING COUNTY AIRPORT
AVAILABLE YEARS: 2011, 2012, 2013, 2014, 2015, 2016, 2017, 2018, 2019, 2020

- NOTES:
- INITIAL 5,000' RUNWAY BUILDOUT TO BE FEDERALLY-FUNDED 4,400' AND STATE AND LOCALLY-FUNDED 600'.
 - RUNWAY DESIGNATION FOR BOTH RUNWAYS ARE NOT EXPECTED TO CHANGE WITHIN THE 20 YEAR PLANNING PERIOD.
 - MAGNETIC DECLINATION: 5° 23' W, ANNUAL RATE OF CHANGE: 0° 4' W
 - SOURCE: NATIONAL CENTER FOR ENVIRONMENTAL INFORMATION (NCEI) DATE: JULY 2021
 - RUNWAY END COORDINATES ARE IDENTIFIED USING NAD83 COORDINATE SYSTEM
 - NAD88 VERTICAL CONTROL DATUM WAS USED
 - RUNWAY MEETS LINE OF SIGHT REQUIREMENTS

NO.	REVISION REFERENCE	DATE



GRIFFIN-SPALDING COUNTY AIRPORT

AIRPORT LAYOUT PLAN

CITY OF GRIFFIN, SPALDING COUNTY, GEORGIA



200 NORTH COBB PARKWAY, BLDG. 400, SUITE 413
MARIETTA, GA 30062
PHONE: (770) 971-5407 FAX: (770) 971-0620

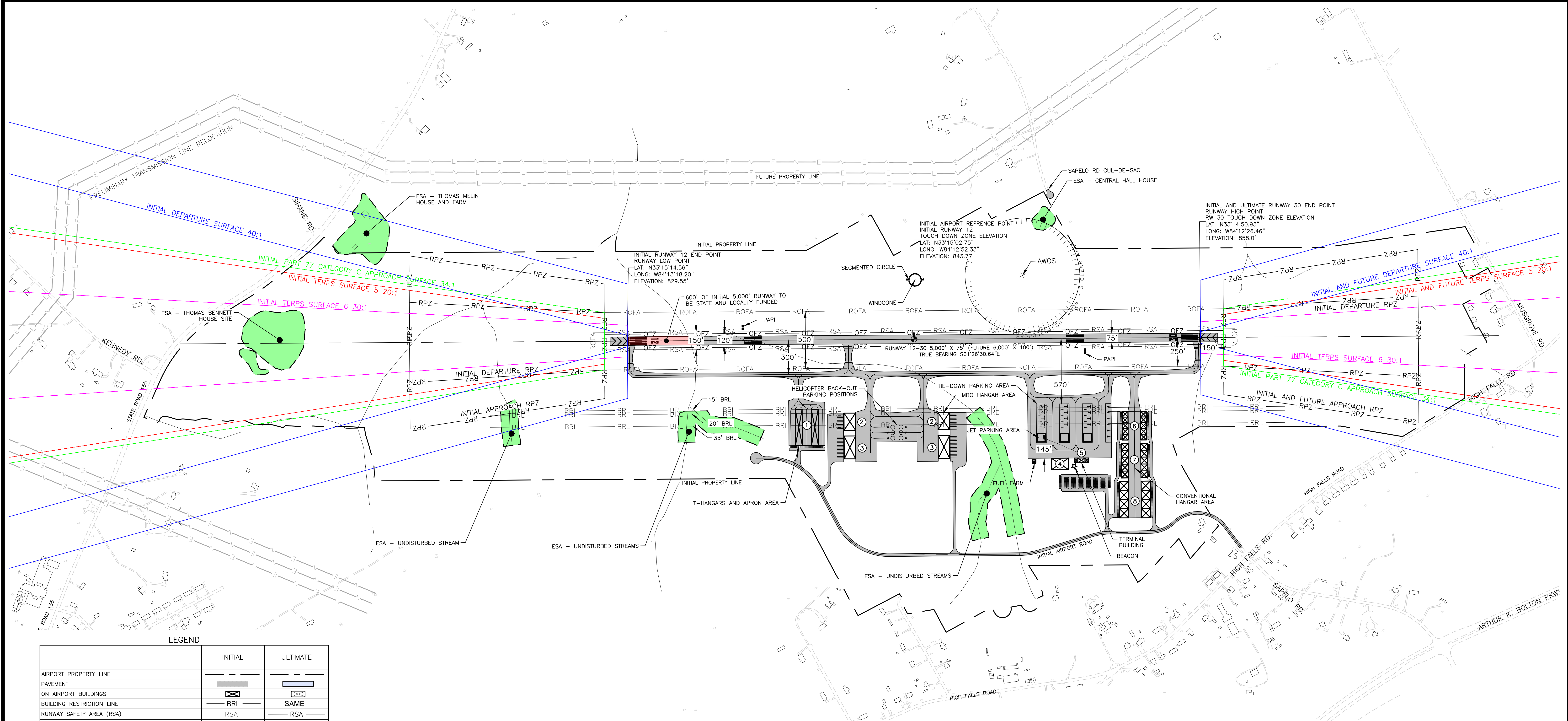
THESE PLANS AND DRAWINGS ARE NOT TO BE REPRODUCED, CHANGED OR COPIED IN ANY FORM OR MANNER WHATSOEVER WITHOUT FIRST OBTAINING THE EXPRESS WRITTEN PERMISSION AND CONSENT OF CROY ENGINEERING, LLC. NOR ARE THEY TO BE ASSIGNED TO ANY PARTY WITHOUT WRITTEN PERMISSION AND CONSENT.

SHEET TITLE
ALP DATA SHEET

DRAWN BY TEP	CHECKED BY RMC
SCALE N/A	ISSUE DATE 09/28/2022

PROJECT NUMBER
1846.019

DRAWING NUMBER
C-001
SHEET 02 of 11



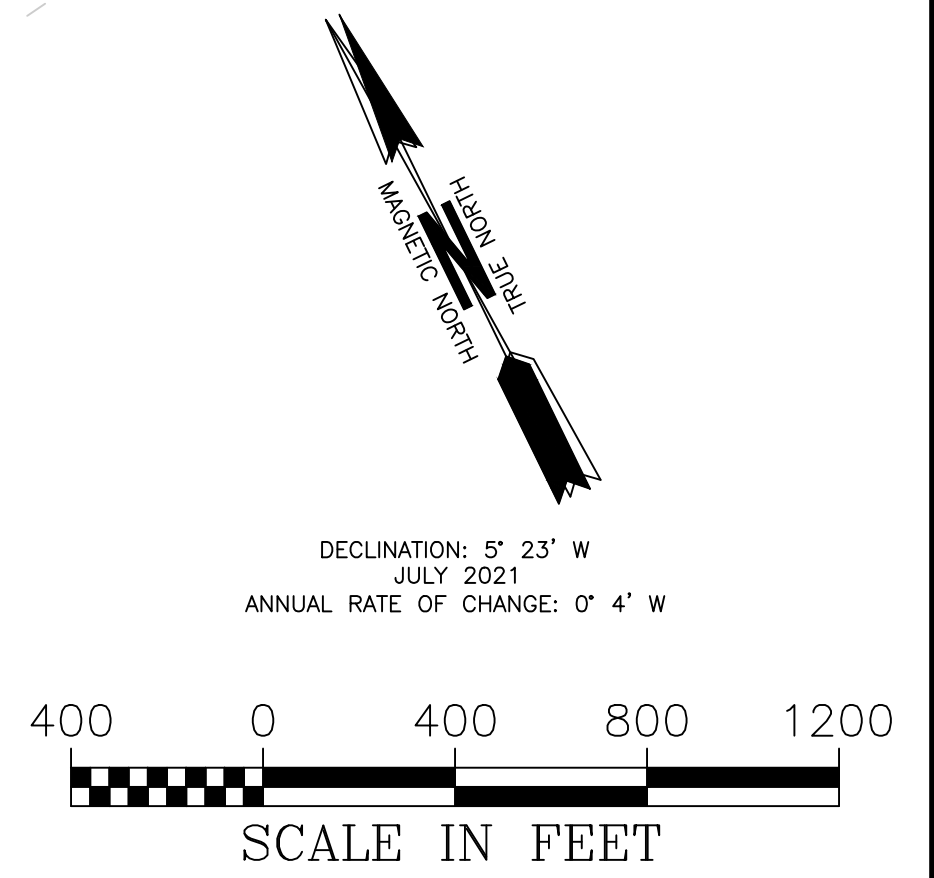
LEGEND

	INITIAL	ULTIMATE
AIRPORT PROPERTY LINE	---	---
PAVEMENT	▬	▬
ON AIRPORT BUILDINGS	⊠	⊠
BUILDING RESTRICTION LINE	BRL	SAME
RUNWAY SAFETY AREA (RSA)	RSA	RSA
RUNWAY OBJECT FREE AREA (ROFA)	ROFA	ROFA
RUNWAY OBSTACLE FREE ZONE (ROFZ)	OFZ	OFZ
RUNWAY PRECISION OBSTACLE FREE ZONE (POFZ)	---	SAME
RUNWAY PROTECTION ZONE (RPZ)	RPZ	RPZ
TAXIWAY SAFETY AREA (TSA)	TSA	SAME
TAXIWAY OBJECT FREE AREA (TOFA)	TOFA	SAME
ROTATING BEACON	⊠	SAME
PAPI	■	■
AUTOMATED WEATHER OBSERVING SYSTEM (AWOS)	⊠	SAME
WINDCONE/ SEGMENTED CIRCLE	⊠	SAME
9' WILDLIFE FENCE	⊠	SAME
PROTECTED ROCK PILE	⊠	SAME
RAIL ROAD	⊠	SAME
FUEL TANK	⊠	SAME
THRESHOLD SITING SURFACE	---	---
PART 77 APPROACH SURFACE	---	---
DEPARTURE SURFACE	---	---
OCS APPROACH SURFACE	---	---
NAVAID CRITICAL AREA	N/A	---

INITIAL RUNWAY PROTECTION ZONES — B-II-4,000				
	RUNWAY 12 (NOT LOWER THAN 3/4 MILE)		RUNWAY 30 (NOT LOWER THAN 3/4 MILE)	
	APPROACH RPZ	DEPARTURE RPZ	APPROACH RPZ	DEPARTURE RPZ
LENGTH	1,700'	1,000'	1,700'	1,000'
INNER WIDTH	1,000'	500'	1,000'	500'
OUTER WIDTH	1,510'	700'	1,510'	700'

AIRSIDE FACILITIES — INITIAL BUILDOUT	
BUILDING NO.	BUILDING DESCRIPTION
1	2 — 12 UNIT T-HANGARS
2	2 — MRO HANGARS (150' X 100')
3	2 — MRO HANGARS (200' X 100')
4	BULK STORAGE HANGAR (150' X 100')
5	TERMINAL BUILDING (4,900± SF)
6	10 — BOX HANGARS (50' X 50')
7	10 — BOX HANGARS (60' X 60')
8	8 — BOX HANGARS (80' X 80')

CONDITIONALLY APPROVED
 FAA STATE BLOCK GRANT PROGRAM
 APPROVAL SUBJECT TO COMMENTS IN APPROVAL LETTER
 APPROVING OFFICIAL: _____ DATE: 01/24/2023
 INTERMODAL PROGRAMS - AVIATION
 GEORGIA DEPARTMENT OF TRANSPORTATION



NO.	REVISION REFERENCE	DATE



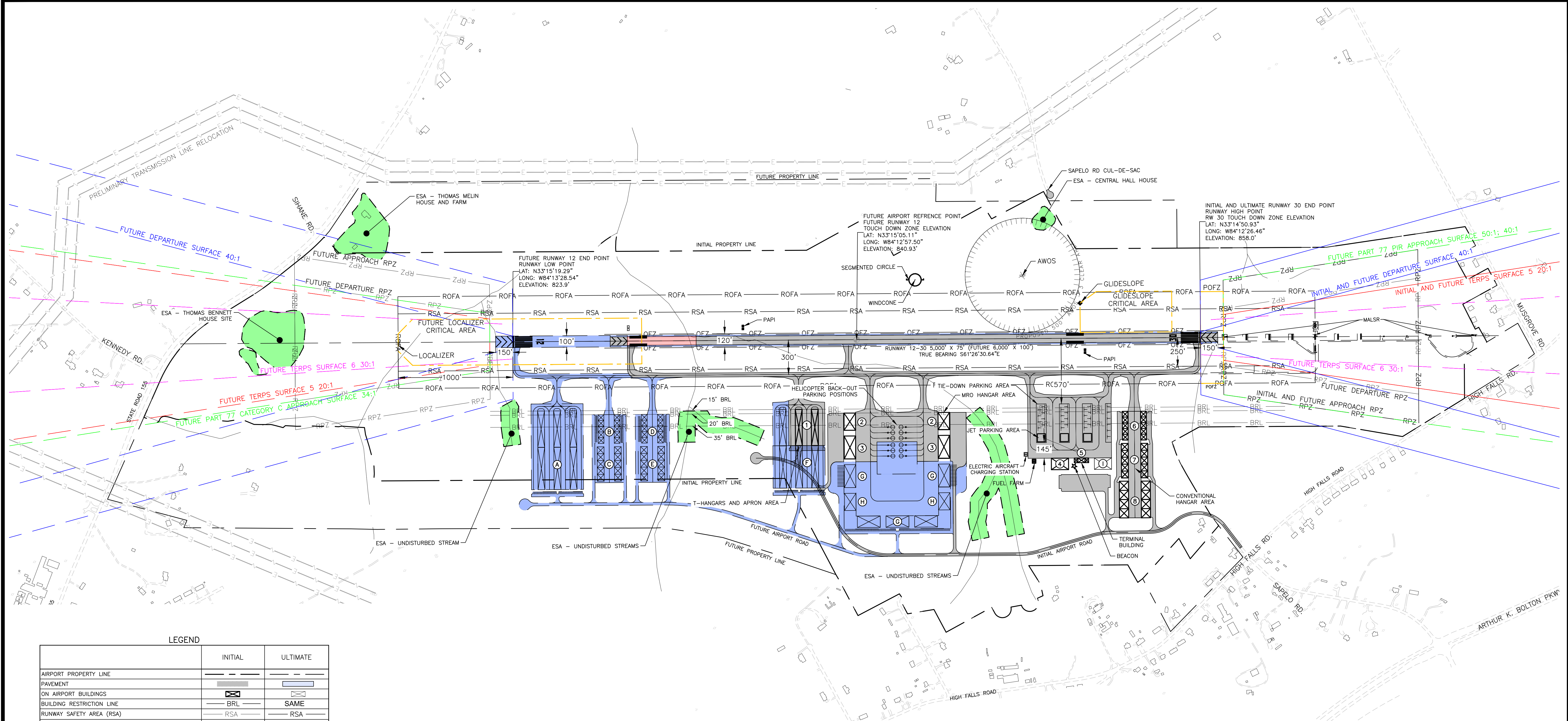
GRIFFIN-SPALDING COUNTY AIRPORT
 AIRPORT LAYOUT PLAN
 CITY OF GRIFFIN, SPALDING COUNTY, GEORGIA

200 NORTH COBB PARKWAY, BLDG. 400, SUITE 413
 MARIETTA, GA 30062
 PHONE: (770) 971-5407 FAX: (770) 971-0620

SHEET TITLE
 AIRPORT LAYOUT PLAN
 — INITIAL

DRAWN BY TEP	CHECKED BY RMC
SCALE 1"=400'	ISSUE DATE 09/28/2022
PROJECT NUMBER 1846.019	
DRAWING NUMBER C-101	
SHEET 03 of 11	

ISSUED FOR REVIEW
 Plan Scale: 1"=400' Drawing Station: 0.07 Plot Style: Croy.ctb Plotted By: Sam Mills on 9/28/2022 2:02 PM
 Drawing Location: P:\Marietta\1846 Griffin-Spalding County Airport Authority\1846.019 Airport Layout Plan.dwg



LEGEND

	INITIAL	ULTIMATE
AIRPORT PROPERTY LINE	---	---
PAVEMENT	▬	▬
ON AIRPORT BUILDINGS	▬	▬
BUILDING RESTRICTION LINE	BRL	SAME
RUNWAY SAFETY AREA (RSA)	RSA	RSA
RUNWAY OBJECT FREE AREA (ROFA)	ROFA	ROFA
RUNWAY OBSTACLE FREE ZONE (ROFZ)	OFZ	OFZ
RUNWAY PRECISION OBSTACLE FREE ZONE (POFZ)	---	SAME
RUNWAY PROTECTION ZONE (RPZ)	RPZ	RPZ
TAXIWAY SAFETY AREA (TSA)	TSA	SAME
TAXIWAY OBJECT FREE AREA (TOFA)	TOFA	SAME
ROTATING BEACON	⊛	SAME
PAPI	■	■
AUTOMATED WEATHER OBSERVING SYSTEM (AWOS)	⊙	SAME
WINDCONE/ SEGMENTED CIRCLE	⊙	SAME
9' WILDLIFE FENCE	⊗	SAME
PROTECTED ROCK PILE	⊕	SAME
RAIL ROAD	⊖	SAME
FUEL TANK	⊗	SAME
THRESHOLD SITING SURFACE	---	---
PART 77 APPROACH SURFACE	---	---
DEPARTURE SURFACE	---	---
OCS APPROACH SURFACE	---	---
NAVAID CRITICAL AREA	N/A	---

FUTURE RUNWAY PROTECTION ZONES — C-II-4,000

	RUNWAY 12 (NOT LOWER THAN 3/4 MILE)		RUNWAY 30 (NOT LOWER THAN 3/4 MILE)	
	APPROACH RPZ	DEPARTURE RPZ	APPROACH RPZ	DEPARTURE RPZ
LENGTH	1,700'	1,700'	1,700'	1,700'
INNER WIDTH	1,000'	500'	1,000'	500'
OUTER WIDTH	1,510'	1,010'	1,510'	1,010'

AIRSIDE FACILITIES — INITIAL BUILDOUT

BUILDING NO.	BUILDING DESCRIPTION
1	2 — 12-UNIT T-HANGARS
2	2 — MRO HANGARS (150' X 100')
3	2 — MRO HANGARS (200' X 100')
4	BULK STORAGE HANGAR (150' X 100')
5	TERMINAL BUILDING (4,900± SF)
6	10 — BOX HANGARS (50' X 50')
7	10 — BOX HANGARS (60' X 60')
8	8 — BOX HANGARS (80' X 80')
9	HELIPAD HANGAR (100' X 100')

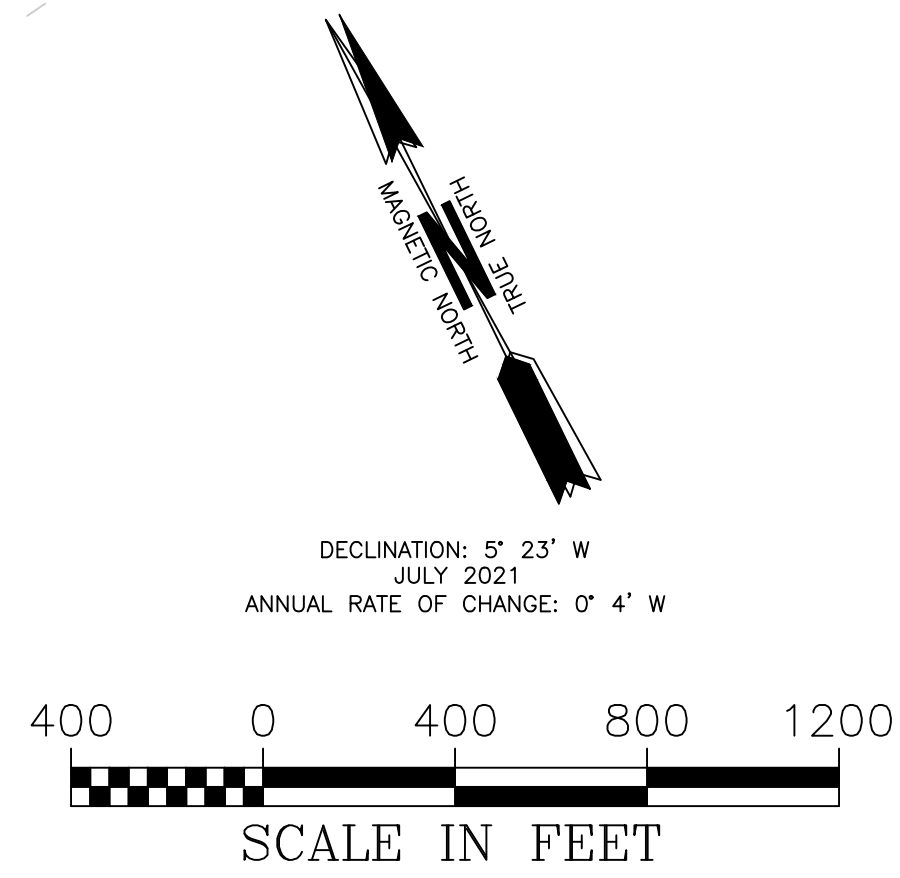
AIRSIDE FACILITIES — FUTURE BUILDOUT

BUILDING NO.	BUILDING DESCRIPTION
A	6 — 12-UNIT T-HANGARS
B	10 — BOX HANGARS (50' X 50')
C	10 — BOX HANGARS (60' X 60')
D	10 — BOX HANGARS (50' X 50')
E	10 — BOX HANGARS (60' X 60')
F	4 — 12-UNIT T-HANGARS
G	5 — MRO HANGARS (200' X 100')
H	2 — MRO HANGARS (150' X 100')
I	BULK STORAGE HANGAR (150' X 100')

CONDITIONALLY APPROVED
FAA STATE BLOCK GRANT PROGRAM
 APPROVAL SUBJECT TO COMMENTS IN APPROVAL LETTER

APPROVING OFFICIAL: _____ DATE: _____

INTERMODAL PROGRAMS - AVIATION
 GEORGIA DEPARTMENT OF TRANSPORTATION



NO.	REVISION REFERENCE	DATE



GRIFFIN-SPALDING COUNTY AIRPORT
 AIRPORT LAYOUT PLAN
 CITY OF GRIFFIN, SPALDING COUNTY, GEORGIA

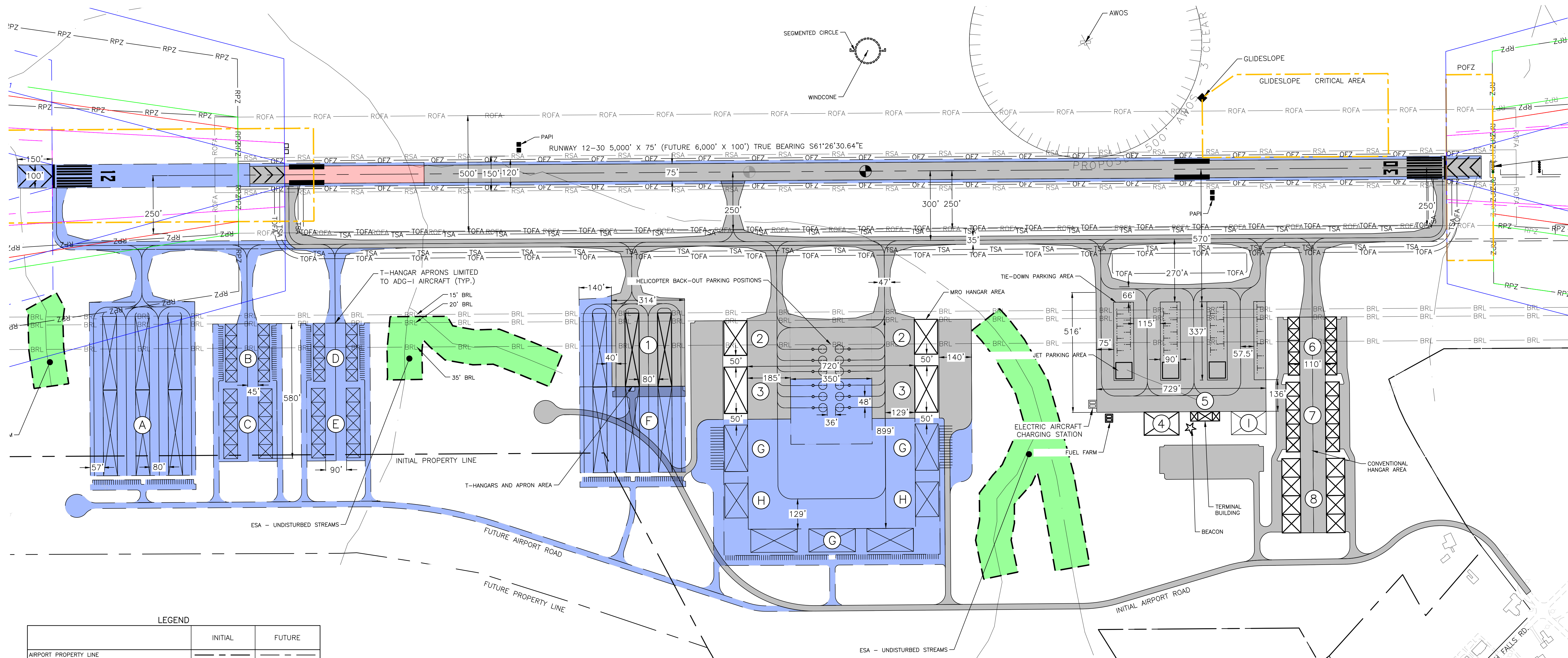
200 NORTH COBB PARKWAY, BLDG. 400, SUITE 413
 MARIETTA, GA 30062
 PHONE: (770) 971-5407 FAX: (770) 971-0620

THESE PLANS AND DRAWINGS ARE NOT TO BE REPRODUCED, CHANGED OR COPIED IN ANY FORM OR MANNER WHATSOEVER WITHOUT FIRST OBTAINING THE EXPRESS WRITTEN PERMISSION AND CONSENT OF CROY ENGINEERING, LLC. NOR ARE THEY TO BE ASSIGNED TO ANY PARTY WITHOUT WRITTEN PERMISSION AND CONSENT.

SHEET TITLE
AIRPORT LAYOUT PLAN — FUTURE

DRAWN BY TEP	CHECKED BY RMC
SCALE 1"=400'	ISSUE DATE 09/28/2022
PROJECT NUMBER 1846.019	
DRAWING NUMBER C-102	
SHEET 04 of 11	

ISSUED FOR REVIEW
 P:\01\1846\1846-019\1846-019-001.dwg
 09/28/2022 10:02:00 AM
 Croy Engineering, LLC
 200 North Cobb Parkway, Bldg. 400, Suite 413, Marietta, GA 30062
 Phone: (770) 971-5407 Fax: (770) 971-0620
 www.croyengineering.com



LEGEND

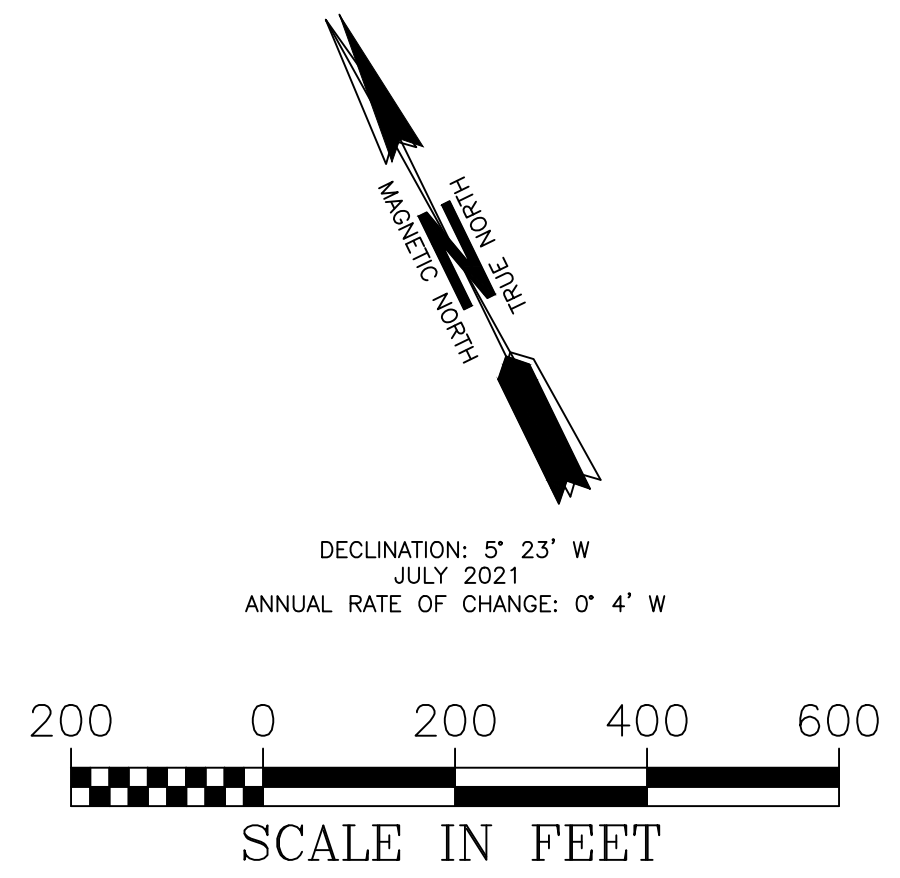
	INITIAL	FUTURE
AIRPORT PROPERTY LINE	---	---
PAVEMENT	▬	▬
ON AIRPORT BUILDINGS	▬	▬
BUILDING RESTRICTION LINE	BRL	SAME
RUNWAY SAFETY AREA (RSA)	RSA	RSA
RUNWAY OBJECT FREE AREA (ROFA)	ROFA	ROFA
RUNWAY OBSTACLE FREE ZONE (ROFZ)	OFZ	OFZ
RUNWAY PRECISION OBSTACLE FREE ZONE (POFZ)	POFZ	SAME
RUNWAY PROTECTION ZONE (RPZ)	RPZ	RPZ
TAXIWAY SAFETY AREA (TSA)	TSA	TSA
TAXIWAY OBJECT FREE AREA (TOFA)	TOFA	TOFA
ROTATING BEACON	⊛	SAME
PAPI	■	■
AUTOMATED WEATHER OBSERVING SYSTEM (AWOS)	⊙	SAME
WINDCONE/ SEGMENTED CIRCLE	⊙	SAME
9' WILDLIFE FENCE	⊗	SAME
PROTECTED ROCK PILE	⊙	SAME
RAIL ROAD	⊕	SAME
FUEL TANK	⊕	SAME
THRESHOLD SITING SURFACE	▬	▬
PART 77 APPROACH SURFACE	▬	▬
DEPARTURE SURFACE	▬	▬
OCS APPROACH SURFACE	▬	▬
NAVAID CRITICAL AREA	N/A	▬

AIRSIDE FACILITIES — INITIAL BUILDOUT

BUILDING NO.	BUILDING DESCRIPTION
1	2 — 12 UNIT T-HANGARS
2	2 — MRO HANGARS (150' X 100')
3	2 — MRO HANGARS (200' X 100')
4	BULK STORAGE HANGAR (150' X 100')
5	TERMINAL BUILDING (4,900±SF)
6	10 — BOX HANGARS (50' X 50')
7	10 — BOX HANGARS (60' X 60')
8	8 — BOX HANGARS (80' X 80')
9	HELIPAD HANGAR (100' X 100')

AIRSIDE FACILITIES — FUTURE BUILDOUT

BUILDING NO.	BUILDING DESCRIPTION
A	6 — 12-UNIT T-HANGARS
B	10 — BOX HANGARS (50' X 50')
C	10 — BOX HANGARS (60' X 60')
D	10 — BOX HANGARS (50' X 50')
E	10 — BOX HANGARS (60' X 60')
F	4 — 12-UNIT T-HANGARS
G	5 — MRO HANGARS (200' X 100')
H	2 — MRO HANGARS (150' X 100')
I	BULK STORAGE HANGAR (150' X 100')



NO.	REVISION REFERENCE	DATE



GRIFFIN-SPALDING COUNTY AIRPORT
 AIRPORT LAYOUT PLAN
 CITY OF GRIFFIN, SPALDING COUNTY, GEORGIA

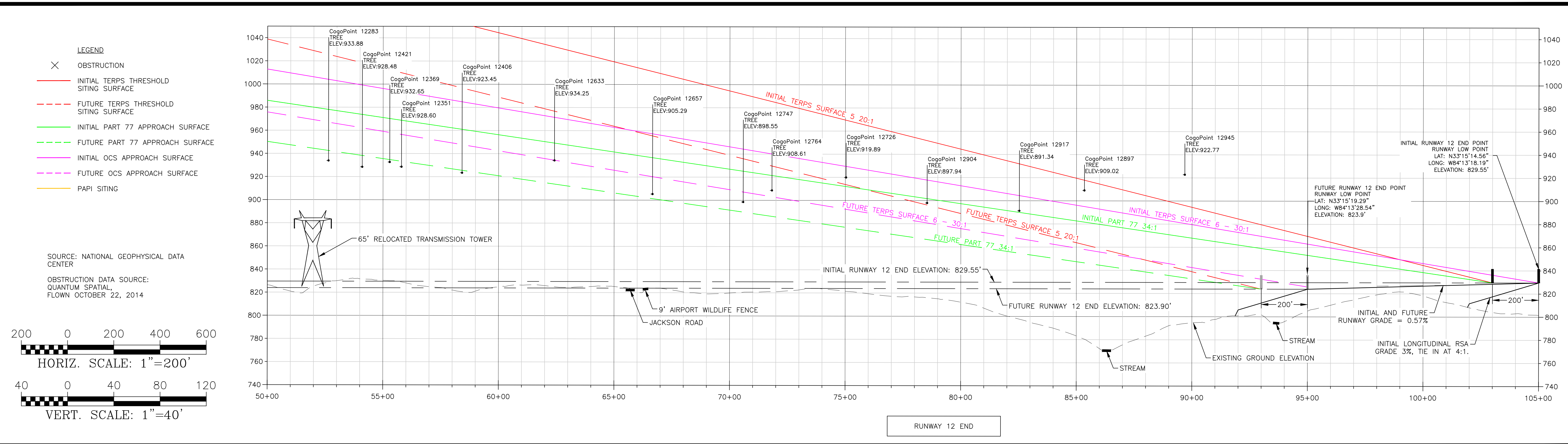
200 NORTH COBB PARKWAY, BLDG. 400, SUITE 413
 MARIETTA, GA 30062
 PHONE: (770) 971-5407 FAX: (770) 971-0620

SHEET TITLE
TERMINAL AREA PLAN

DRAWN BY TEP	CHECKED BY RMC
SCALE 1" = 200'	ISSUE DATE 09/28/2022
PROJECT NUMBER 1846.019	
DRAWING NUMBER C-103	
SHEET 05 of 11	

ISSUED FOR REVIEW
 Drawing No. 1846.019, Drawing Revision: 0.01, Plot Style: Design.ctb, Plotted By: Sam Mills on 09/28/2022, 1:02 PM
 Location: P:\Marietta\1846 Griffin-Spalding County Airport Authority\1846.019 Airport Layout Plan.dwg

OBSTRUCTION #	PARCEL #	ELEVATION	TYPE	ACTION
12406	NWA - 3	923.45	Tree	Remove
12351	NWA - 2	928.60	Tree	Remove
12369	NWA - 4	932.65	Tree	Remove
12283	NWA - 6	933.88	Tree	Remove
12421	NWA - 12	928.48	Tree	Remove
12224	NWA - 18	950.84	Tree	Remove
12726	AF - 09	919.89	Tree	Remove
12897	AF - 12	909.02	Tree	Remove
12945	AF - 02	922.77	Tree	Remove
12917	AF - 22	891.34	Tree	Remove
12657	AF - 11	905.29	Tree	Remove
12747	NWA - 9	898.55	Tree	Remove
12764	AF - 12	908.61	Tree	Remove
12633	NWA - 8	934.25	Tree	Remove
12904	NWA - 16	897.94	Tree	Remove



NO.	REVISION REFERENCE	DATE



GRIFFIN-SPALDING COUNTY AIRPORT
 AIRPORT LAYOUT PLAN
 CITY OF GRIFFIN, SPALDING COUNTY, GEORGIA

200 NORTH COBB PARKWAY, BLDG. 400, SUITE 413
 MARIETTA, GA 30062
 PHONE: (770) 971-5407 FAX: (770) 971-0620

SHEET TITLE
**INNER PORTION
 APPROACH - RW 12**

DRAWN BY
 TEP

CHECKED BY
 RMC

SCALE
 1"=200'

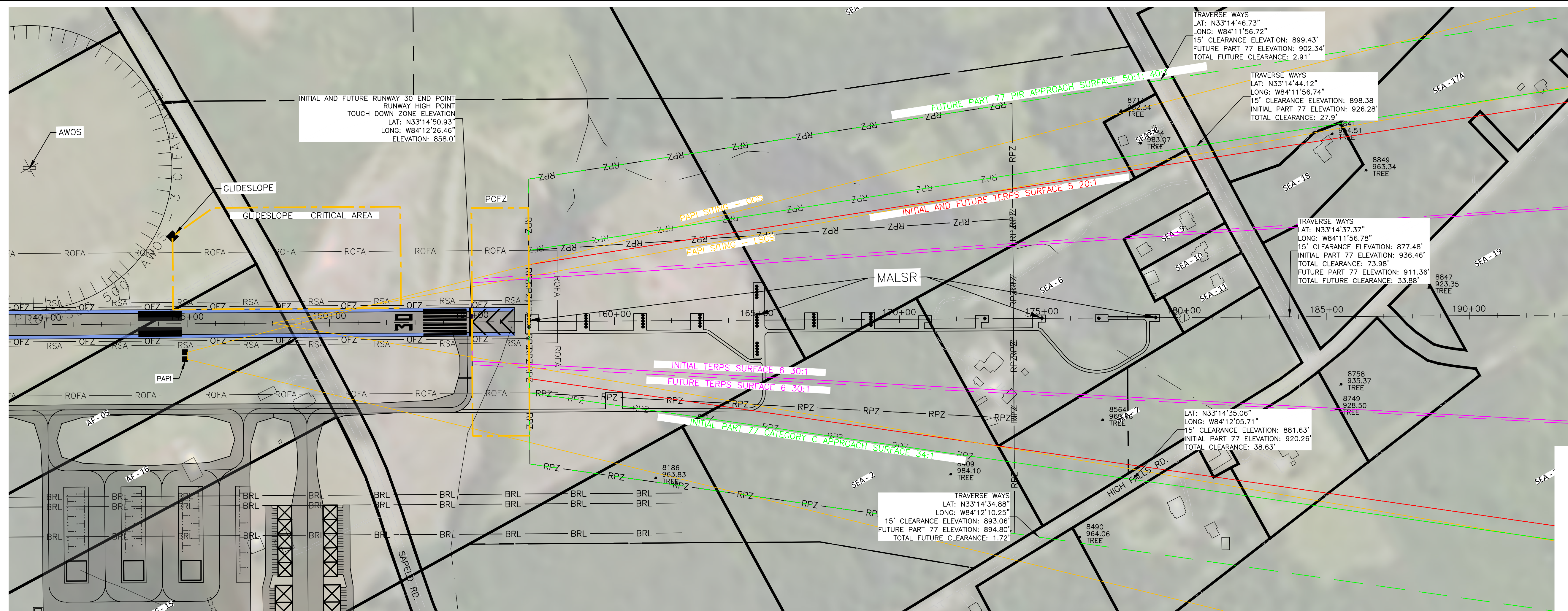
ISSUE DATE
 09/28/2022

PROJECT NUMBER
 1846.019

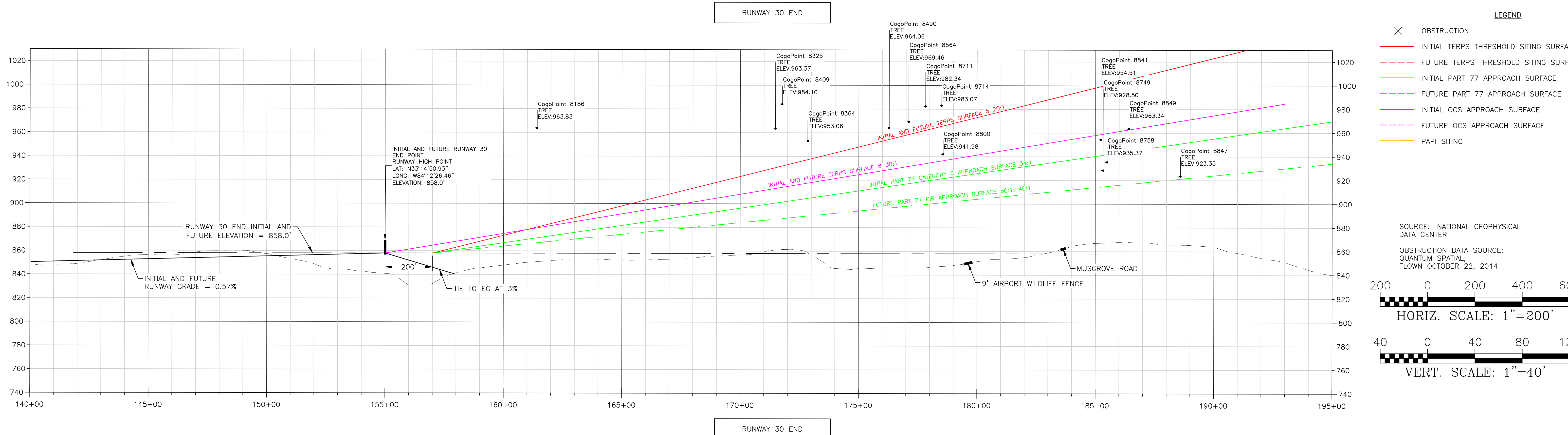
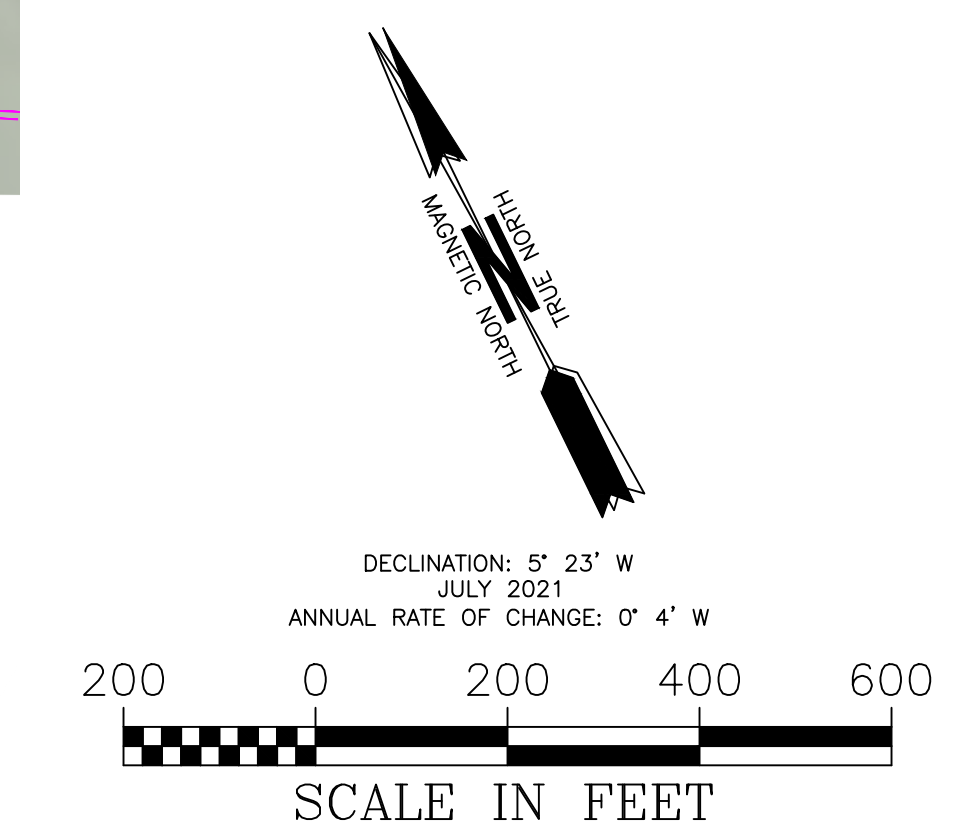
DRAWING NUMBER
C-201

SHEET 06 of 11

ISSUED FOR REVIEW



OBSTRUCTION #	PARCEL #	ELEVATION	TYPE	ACTION
8711	SEA - 3	982.34	Tree	Remove
8714	SEA - 8	983.07	Tree	Remove
8841	SEA - 18	954.51	Tree	Remove
8849	SEA - 17A	963.34	Tree	Remove
8847	SEA - 19	923.35	Tree	Remove
8758	SEA - 19	935.37	Tree	Remove
8749	SEA - 15	928.5	Tree	Remove
8564	SEA - 7	969.46	Tree	Remove
8409	SEA - 2	984.10	Tree	Remove
8490	SEA - 13	964.06	Tree	Remove



NO.	REVISION REFERENCE	DATE



GRIFFIN-SPALDING COUNTY AIRPORT
AIRPORT LAYOUT PLAN
CITY OF GRIFFIN, SPALDING COUNTY, GEORGIA



SHEET TITLE
INNER PORTION
APPROACH — RW 30

DRAWN BY
TEP

CHECKED BY
RMC

SCALE
1"=200'

ISSUE DATE
09/28/2022

PROJECT NUMBER
1846.019

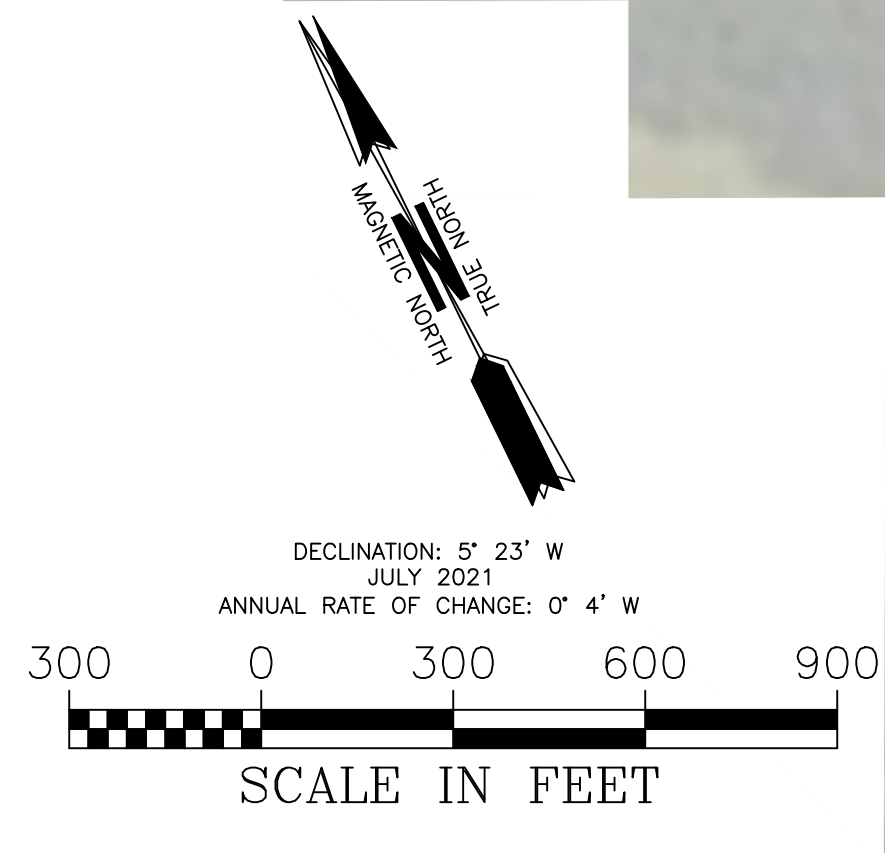
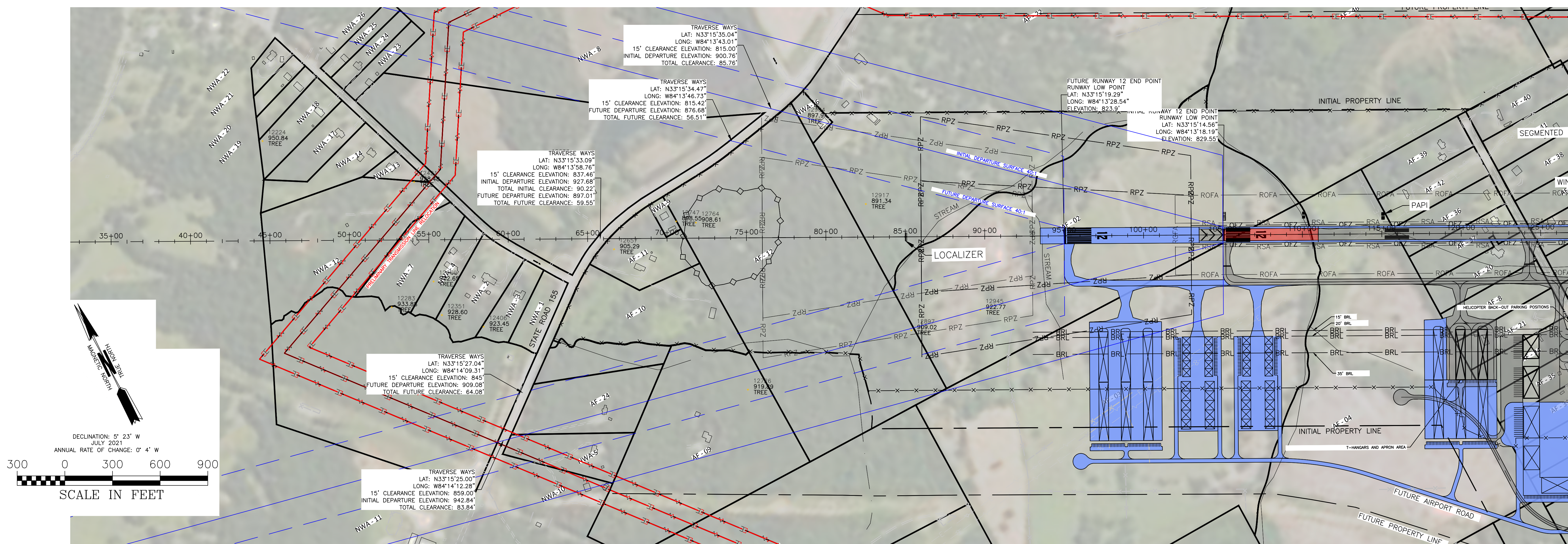
DRAWING NUMBER
C-202

SHEET 07 of 11

ISSUED FOR REVIEW

Drawing Location: P:\Marietta\1846 Griffin-Spalding County Airport\Airport Authority\1846.019\ALP Inner Portion Drawings.dwg

Plot Scale: 1"=50', Drawing Station: 0.0', Plot Style: Design.ctb, Plotted By: Sam Mills on 9/28/2022, 2:03 PM

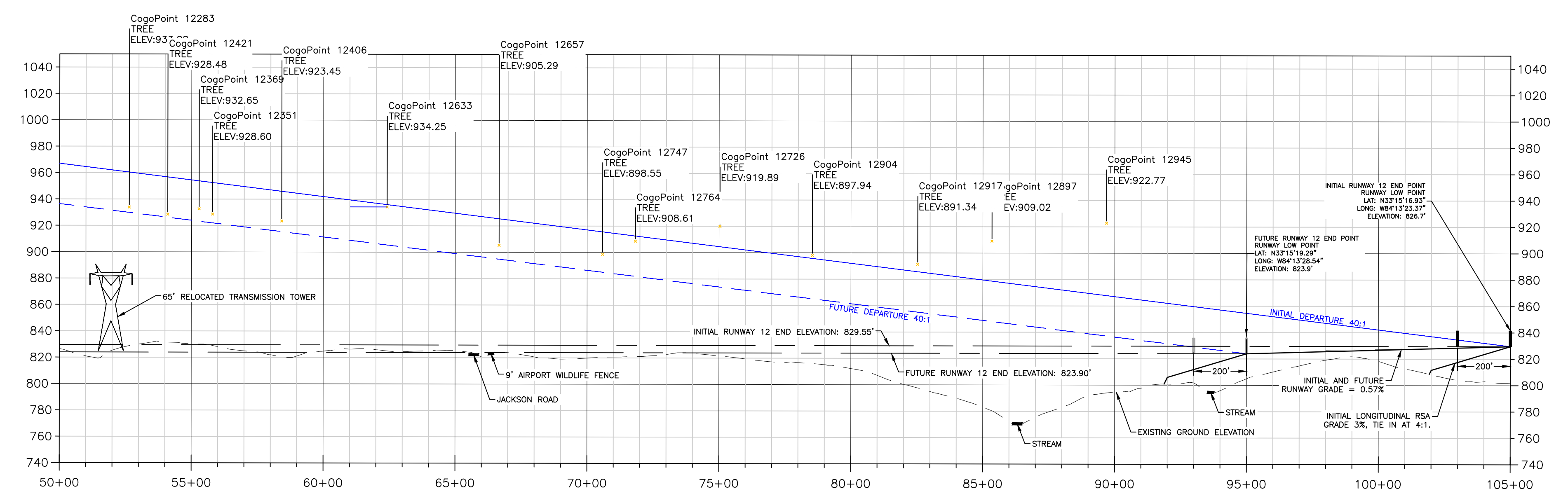


RUNWAY 12 END

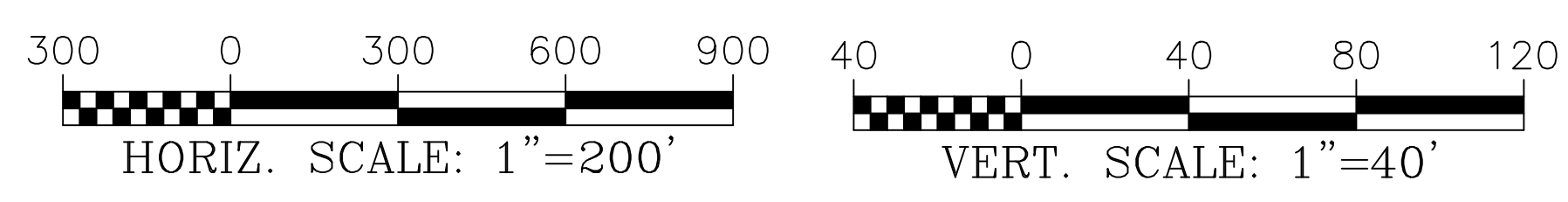
LEGEND

- ✕ TALLEST OBSTRUCTION PER PARCEL
- INITIAL DEPARTURE SURFACE
- - - FUTURE DEPARTURE SURFACE

SOURCE: NATIONAL GEOPHYSICAL DATA CENTER
OBSTRUCTION DATA SOURCE: QUANTUM SPATIAL, FLOWN OCTOBER 22, 2014



RUNWAY 12 END



NO.	REVISION REFERENCE	DATE

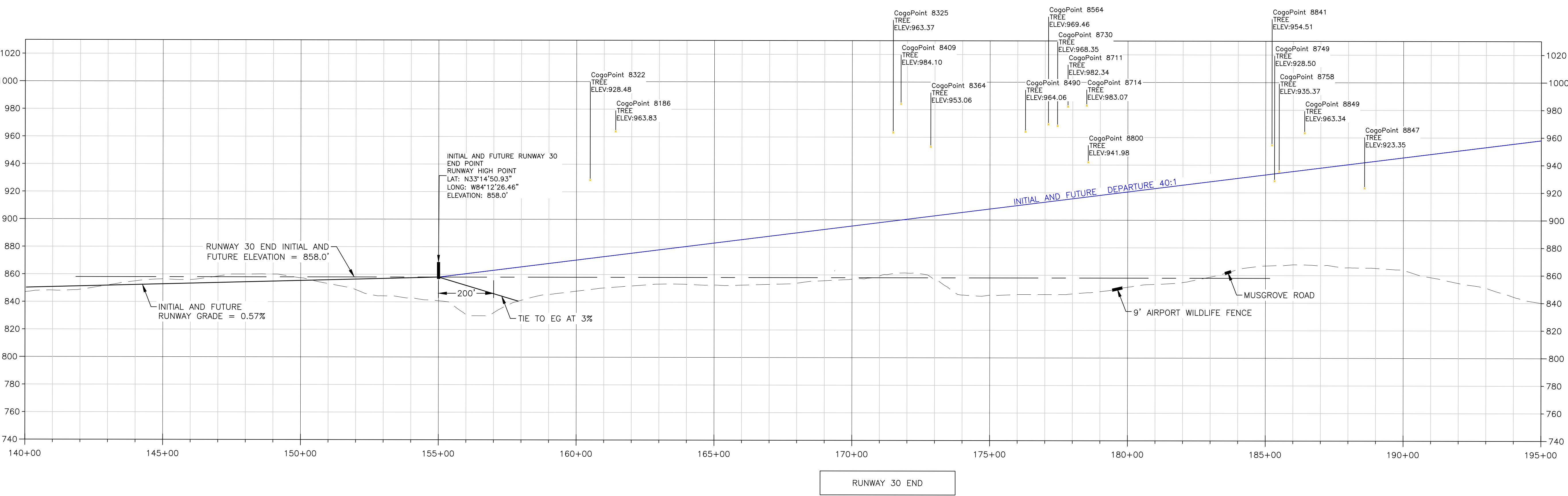
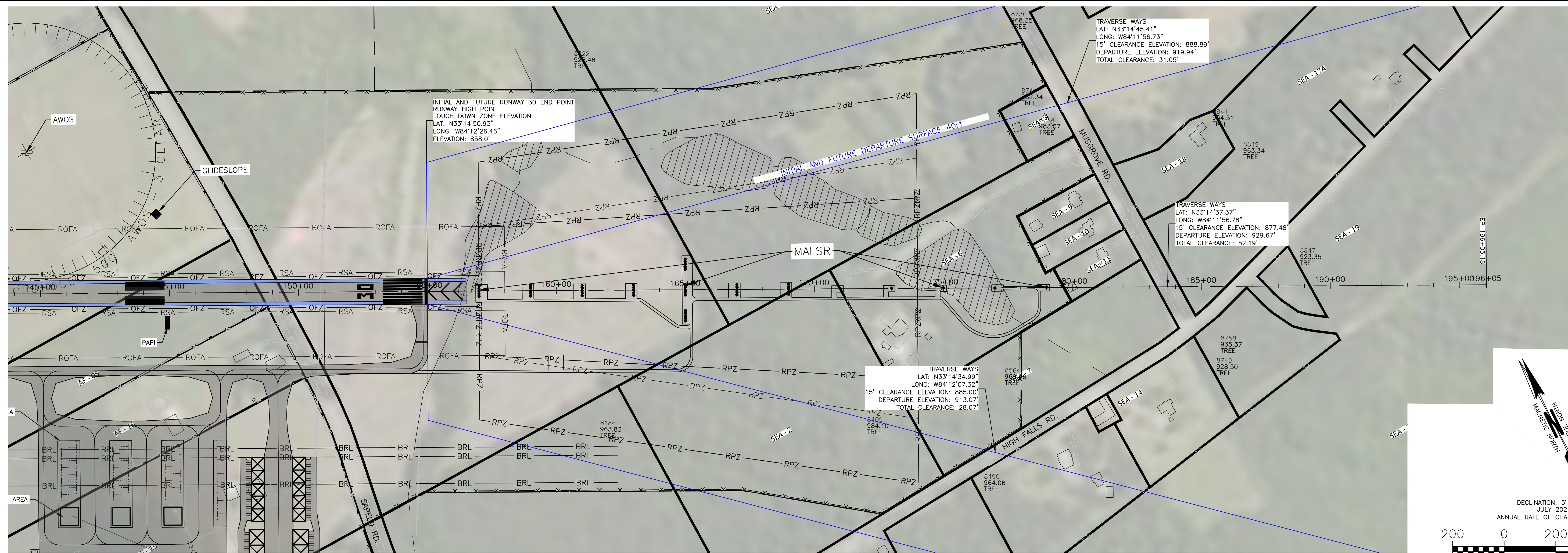
GRIFFIN-SPALDING COUNTY AIRPORT
 AIRPORT LAYOUT PLAN
 CITY OF GRIFFIN, SPALDING COUNTY, GEORGIA

CROY
 200 NORTH COBB PARKWAY, BLDG. 400, SUITE 413
 MARIETTA, GA 30062
 PHONE: (770) 971-5407 FAX: (770) 971-0620

SHEET TITLE
INNER PORTION DEPARTURE — RW 12

DRAWN BY TEP	CHECKED BY RMC
SCALE 1" = 300'	ISSUE DATE 09/28/2022
PROJECT NUMBER 1846.019	
DRAWING NUMBER C-203	
SHEET 08 of 11	

ISSUED FOR REVIEW
 Drawing Location: P:\Marietta\1846 Griffin-Spalding County Airport\1846.019\1846.019.dwg
 Drawing Title: Inner Portion Departure - RW 12
 Date: 09/28/2022
 Scale: 1" = 300'
 Project Number: 1846.019
 Drawing Number: C-203
 Sheet: 08 of 11



NO.	REVISION REFERENCE	DATE



GRIFFIN-SPALDING COUNTY AIRPORT
AIRPORT LAYOUT PLAN
CITY OF GRIFFIN, SPALDING COUNTY, GEORGIA

200 NORTH COBB PARKWAY, BLDG. 400, SUITE 413
MARIETTA, GA 30062
PHONE: (770) 971-5407 FAX: (770) 971-0620

THESE PLANS AND DRAWINGS ARE NOT TO BE REPRODUCED, CHANGED OR COPIED IN ANY FORM OR MANNER WHATSOEVER WITHOUT FIRST OBTAINING THE EXPRESS WRITTEN PERMISSION AND CONSENT OF CROY ENGINEERING, LLC. NOR ARE THEY TO BE ASSIGNED TO ANY PARTY WITHOUT WRITTEN PERMISSION AND CONSENT.

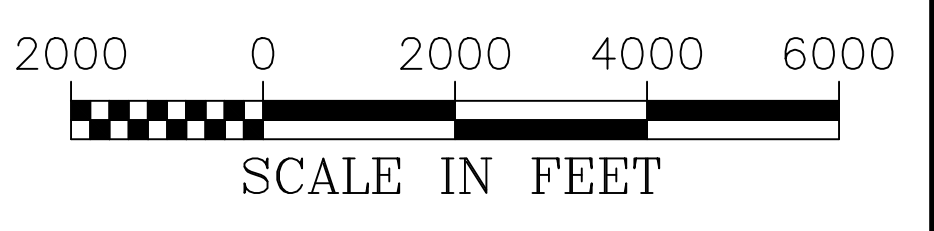
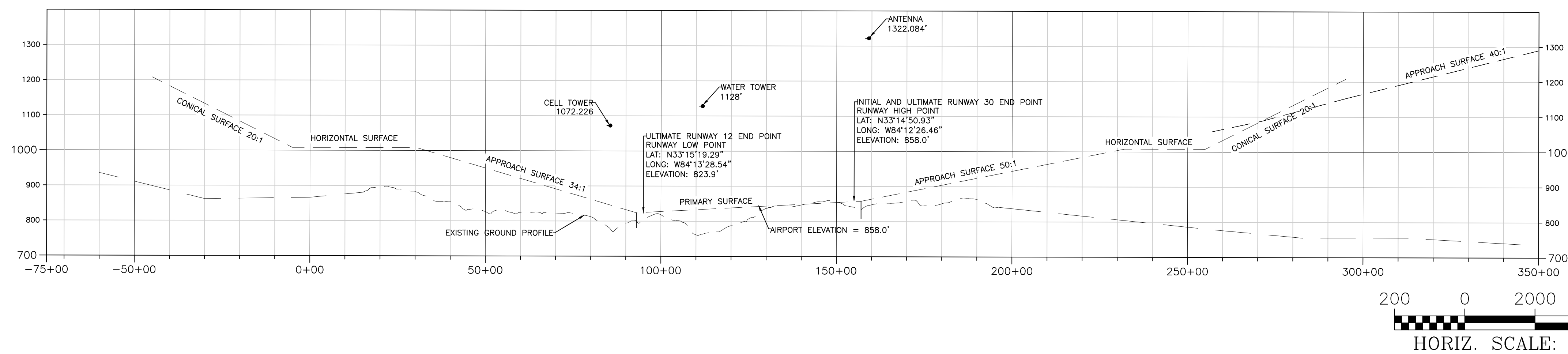
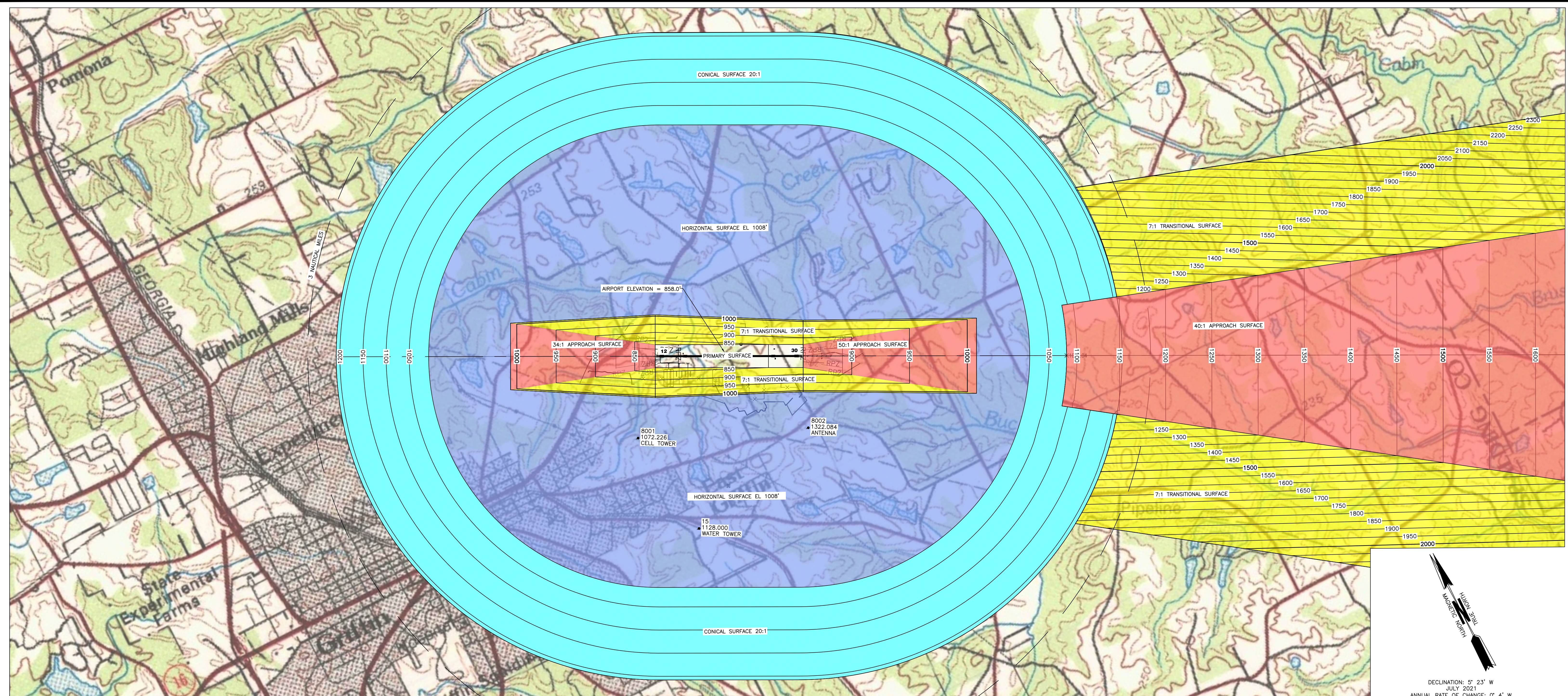
SHEET TITLE
INNER PORTION
DEPARTURE — RW 30

DRAWN BY TEP	CHECKED BY RMC
SCALE 1"=200'	ISSUE DATE 09/28/2022
PROJECT NUMBER 1846.019	
DRAWING NUMBER C-204	
SHEET 09 of 11	

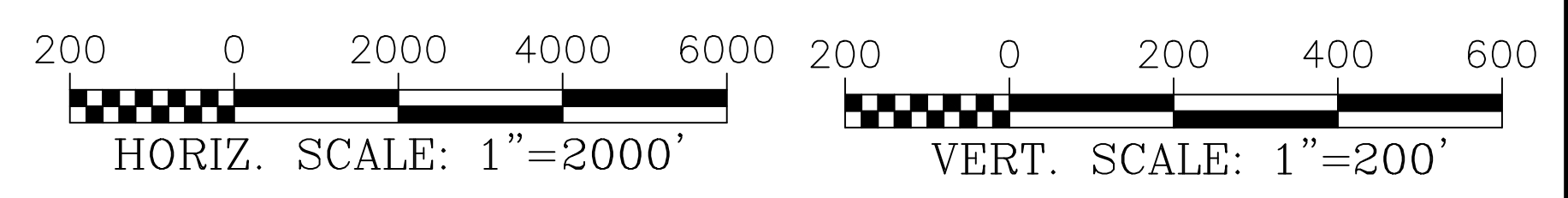
ISSUED FOR REVIEW

Drawing Location: P:\Marietta\1846 Griffin-Spalding County Airport\1846.019\1846.019_Airport Layout\1846.019_Airport Layout\1846.019_Airport Layout.dwg

Plot Scale: 1"=50' Drawing Date: 09/28/2022 Drawing Title: 1846.019_Airport Layout.dwg



SOURCE: NATIONAL GEOPHYSICAL DATA CENTER
 OBSTRUCTION DATA SOURCE: QUANTUM SPATIAL,
 FLOWN OCTOBER 22, 2014.
 NO FAA TOWER DATA LOCATED WITHIN
 OR NEAR PART 77 AIRSPACE



NO.	REVISION REFERENCE	DATE



GRIFFIN-SPALDING COUNTY AIRPORT
 AIRPORT LAYOUT PLAN
 CITY OF GRIFFIN, SPALDING COUNTY, GEORGIA

200 NORTH COBB PARKWAY, BLDG. 400, SUITE 413
 MARIETTA, GA 30062
 PHONE: (770) 971-5407 FAX: (770) 971-0620

THESE PLANS AND DRAWINGS ARE NOT TO BE REPRODUCED, CHANGED OR COPIED IN ANY FORM OR MANNER WHATSOEVER WITHOUT FIRST OBTAINING THE EXPRESS WRITTEN PERMISSION AND CONSENT OF CROY ENGINEERING, LLC, NOR ARE THEY TO BE ASSIGNED TO ANY PARTY WITHOUT WRITTEN PERMISSION AND CONSENT.

SHEET TITLE
AIRSPACE ANALYSIS

DRAWN BY TEP	CHECKED BY RMC
SCALE 1"=2000'	ISSUE DATE 09/28/2022
PROJECT NUMBER 1846.019	
DRAWING NUMBER C-301	
SHEET 10 of 11	

ISSUED FOR REVIEW

Drawing Location: P:\Marietta\1846 Griffin-Spalding County Airport Airspace Analysis\Design\846.019\AALP_Airspace_Analysis.dwg
 Plot Scale: 1"=500', Drawing Station: 0.0', Plot Style: Design.ctb, Plotted By: Sam Mills on 9/28/2022, 2:05 PM

